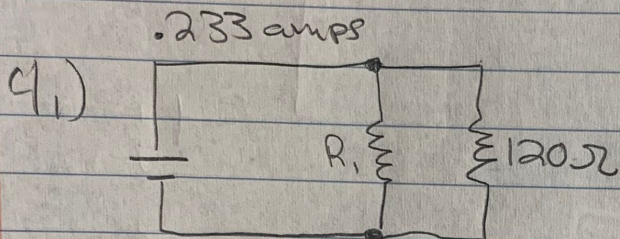
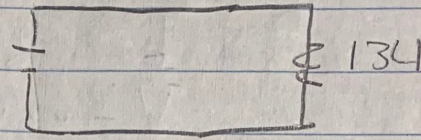
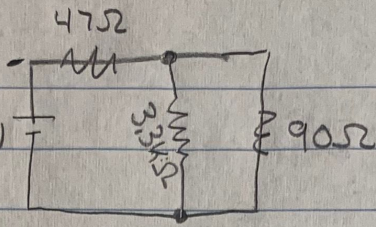


$$R_T = 134.6 \Omega$$

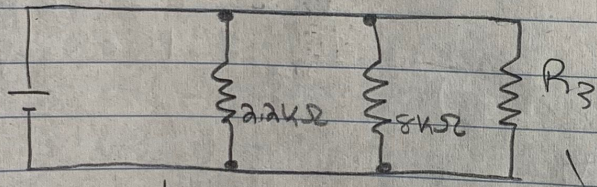
$$I_T = 12V / 134.6 \Omega$$

$$= 0.089 \text{ amps}$$

$$P_T = 0.089 \text{ amps} (12V) = 1.068 \text{ watts}$$

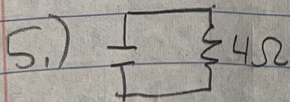


$$0.233 \text{ amps} = \frac{12V}{\left(\frac{1}{R_1} + \frac{1}{120\Omega}\right)^{-1}} \Rightarrow R_1 = 90.22 \Omega$$



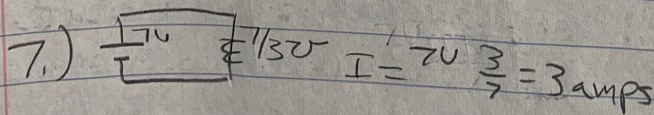
$$370 \Omega = \frac{1}{\frac{1}{2200\Omega} + \frac{1}{8000\Omega} + \frac{1}{R_3}}$$

$$R_3 = 470.99 \Omega$$



6.)

$$I = 4V / 2\Omega = 2 \text{ amp}$$

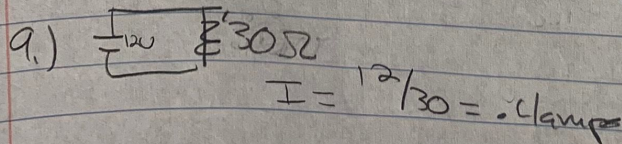


8.)

$$I = 6 \text{ amps}$$

$$V = 12 \text{ volts}$$

$$V_2 = 4 \text{ volts}$$



10.)

$$I_T = 0.17 \text{ amps}$$

$$I_{top} = 0.1 \text{ amps}$$

$$I_{12} = 0.115 \text{ amps}$$

$$R_{2+3} = 2 / 0.07 = 30 \Omega$$

11.)

$$I_2 = 1$$

$$I = 1.5$$

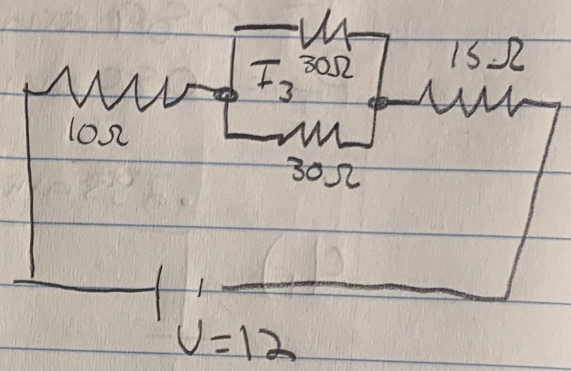
$$R_3 = 6.7 \Omega$$

12.)  $I = .2 \text{ amps}$   
 $V = 6 \text{ volts}$

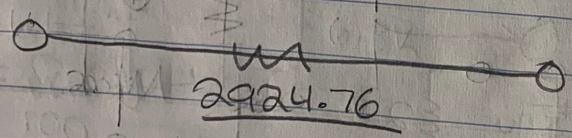
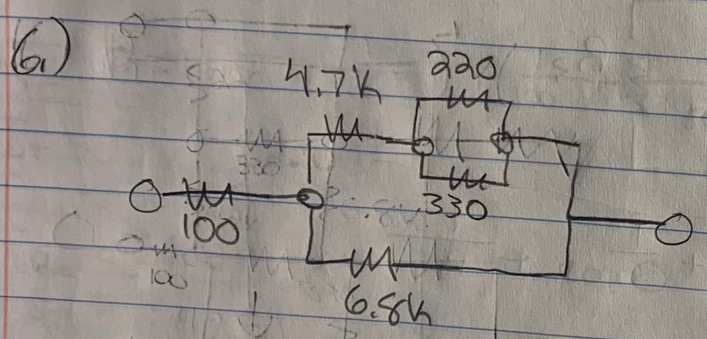
13.)  $I = .4 \text{ amps}$   
 $V = 12 \text{ volts}$

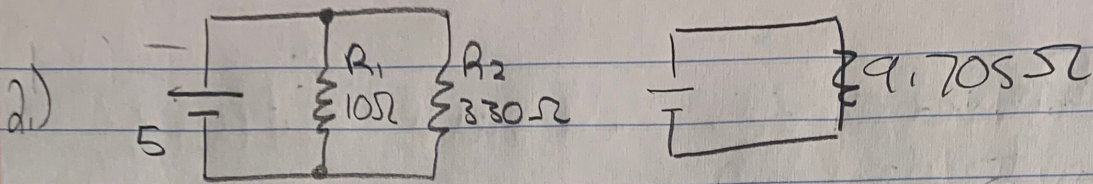
14.)  $I_2 = 1/20 \text{ amp}$   
 $R_1 = 120 \Omega$

15.)



$R_T = 40 \Omega$   
 $I_T = .3 \text{ amps}$   
 $P = 4 \text{ watts}$   
 $I_{R2} = .15 \text{ amp}$





$$R_T = 9.705 \Omega$$

$$I_T = 5V / 9.705 = .515 \text{ amps}$$

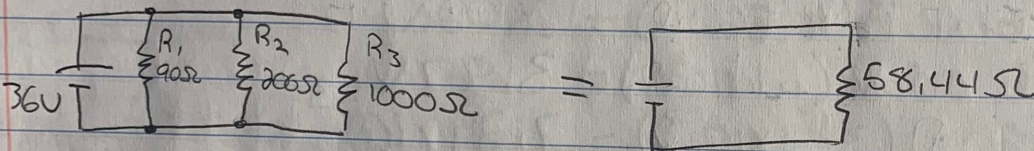
$$I_{R1} = 5V / 10 \Omega = .5 \text{ amps}$$

$$I_{R2} = 5V / 330 \Omega = .015 \text{ amps}$$

$$P_{R1} = 5V(.5) = 2.5 \text{ watts}$$

$$P_{R2} = 5V(.015) = .075 \text{ watts}$$

$$P_T = 5V(.515 \text{ amp}) = 2.575$$



$$R_T = 58.44 \Omega$$

$$I_T = 36V / 58.44 \Omega = .616 \text{ amps}$$

$$I_{R1} = 36V / 90 \Omega = .4 \text{ amps}$$

$$I_{R2} = 36V / 200 \Omega = .18 \text{ amps}$$

$$I_{R3} = 36V / 1000 \Omega = .036 \text{ amps}$$

$$P_T = 36V(.616 \text{ amps}) = 22.176 \text{ watts}$$

It is smaller. That makes sense because we are adding inverse values so when combined it is going to be less than the numbers at the highest.

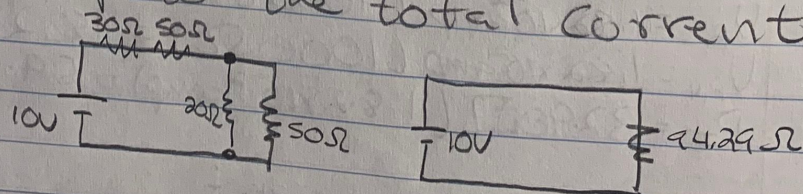
Yes they add up to the total currents.

3)  $R_T = 94.29 \Omega$

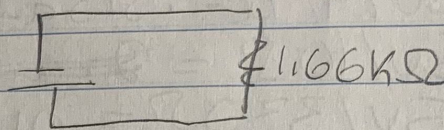
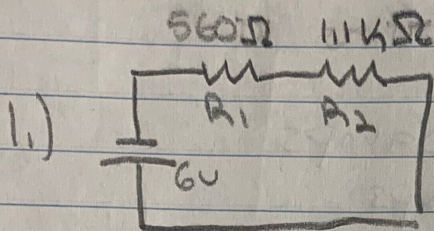
$$I_T = 10 / 94.29 \Omega$$

$$= .106 \text{ amp}$$

$$P_T = 10V(.106 \text{ amp}) = 1.06 \text{ wats}$$



John Proctor  
intro to digi fab  
circuits



$$R_T = 1.66 \text{ k}\Omega$$

$$I_T = 6\text{V} / 1660\Omega = 3.61 \text{ mAmp}$$

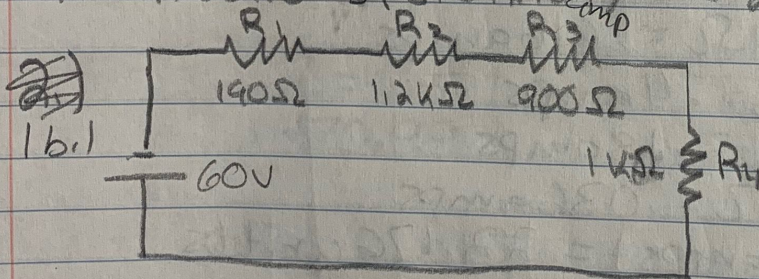
$$V_{R1} = 3.61 \times 10^{-3} \text{ amp} (560\Omega) = 2.02 \text{ V}$$

$$V_{R2} = 3.61 \times 10^{-3} \text{ amp} (1.1 \times 10^3 \Omega) = 3.97 \text{ V}$$

$$P_{R1} = 560\Omega (3.61 \times 10^{-3} \text{ amp})^2 = 7.29 \times 10^{-3} \text{ watt}$$

$$P_{R2} = 1.1 \times 10^3 \Omega (3.61 \times 10^{-3} \text{ amp})^2 = 1.43 \times 10^{-2} \text{ watt}$$

$$P_T = 1.66 \times 10^3 \Omega (3.61 \times 10^{-3} \text{ amp})^2 = 2.16 \times 10^{-2} \text{ watt}$$



$$R_T = 3290\Omega$$

$$I_T = 60\text{V} / 3290\Omega = 1.82 \times 10^{-2} \text{ amp}$$

$$V_{R1} = 1.82 \times 10^{-2} \text{ amp} (190\Omega) = 3.458 \text{ V}$$

$$V_{R2} = 1.82 \times 10^{-2} \text{ amp} (1.2 \times 10^3 \Omega) = 21.84 \text{ V}$$

$$V_{R3} = 1.82 \times 10^{-2} \text{ amp} (900\Omega) = 16.38 \text{ V}$$

$$V_{R4} = 1.82 \times 10^{-2} \text{ amp} (1000\Omega) = 18.2 \text{ V}$$

$$P_T = 3290\Omega (1.82 \times 10^{-2} \text{ amp})^2 = 59.87 \text{ watt}$$